

BackUPS Pro

Introducing APC BackUPS Pro UXI UPS with stunning looks and class leading features like LCD screen , green features and convenience to add external battery

BR1000GUXI

BR1500GUXI



APC BackUPS Pro BR1000/BR1500GUXI offers great new features that no other UPS offers today

- > Easy to understand LCD Screen
- > Great looks
- > Green features - saves electricity
- > Flexibility to use external batteries of your choice – choose between 12Ah, 18Ah and 26Ah SMF battery
- > PowerChute 3.0 Software
- > 6 Indian sockets

BackUPS Pro Features

LCD Screen

LCD Screen that is easy to understand. Now its easy to check the UPS parameters. Displays

- > Sensitivity setting
 - > Battery Charge
 - > Power Saving function on/off
 - > On-Line / On Battery
 - > Replace Battery
 - > Overload
 - > AVR
 - > Input / Output Voltage
 - > System Faults
 - > Mute On/Off
 - > Load in Watts & Percent



Great looks

With its stunning looks it is sure to win a lot of admiration.

- > For once you can now showoff your UPS



Green Feature

Programmable master outlet controls the slave outlet and switches off the load on slave outlet if the master goes in hibernation

- > Saves upto INR2000 in electricity bill every year



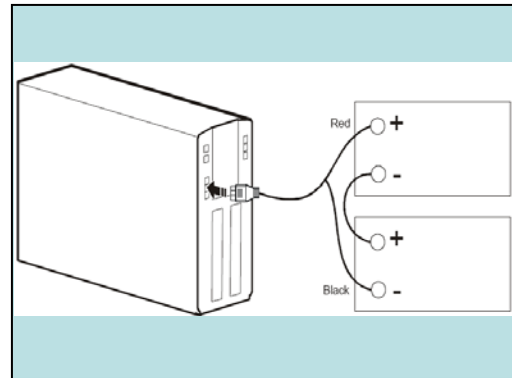
BackUPS Pro Features

Flexibility to use external batteries of your choice

Now choose external batteries as per your runtime requirement

- > Choose between 12Ah (APCBAT12AHSMF), 18Ah (APCBAT18AHSMF) and 26Ah (APCBAT26AHSMF) AMF batteries
- > Batteries are sold separately

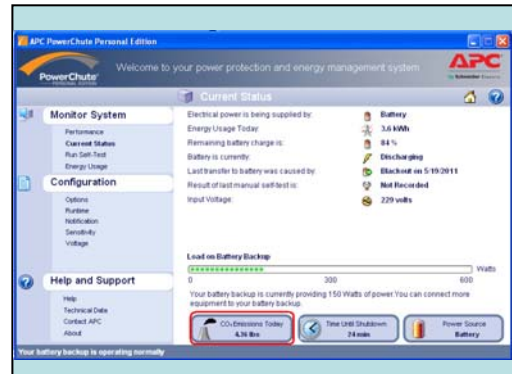
Always connect only two 12V SMF batteries of same capacity in series.



PowerChute 3.0

Great new software that does more than just switching off the PC

- > Know your energy consumption
- > CO2 emission – knowing it is the first step to controlling it



6 nos 3 pin Indian Outlets

- > 4 Battery backed sockets
- > 2 Surge only sockets
- > Standard Indian 6A sockets



Product Features	BR1000GUXI	BR1500GUXI
VA	1000 VA	1500V
Maximum Load	600 W	865W
Nominal Input Voltage	220 Vac-240 Vac	
Online Input Voltage Range	170 Vac to 294 Vac	
Automatic Voltage Regulation	182 Vac-216 Vac +17%	
	252 Vac-282 Vac -17%	
Frequency Range	50/60 Hz \pm 1 Hz	
On-battery wave shape	Step-approximated sine-wave	
Typical Recharge Time	Up to 8 hours	
Transfer Time	10 ms, maximum	
Operating Temperature	0° to 40° C (32° to 104°F)	
Storage Temperature	-5° to 45° C (23° to 113° F)	
Unit Dimensions	30.1 x 11.2 x 38.2 cm (11.9 x 4.4 x 15 in)	
Unit Weight	6.6 kg (14.5 lbs)	
Interface	Serial*, USB	
Charging Current	3 A \pm 10%	
Battery Type	Sealed Maintenance Free (SMF) batteries	
<p>Recommended Batteries: APCBAT12AHSMF, APCBAT18AHSMF and APCBAT26AHSMF.</p> <p>Do not exceed the maximum or minimum recommended battery charging current rate when configuring the Ah capacity of the external battery system.</p> <p>Always recycle used batteries.</p>		

*A standard serial cable is incompatible with the Back-UPS. Use only an APC serial cable. To order an APC serial cable go to the APC Web site or call customer service. Refer to APC Customer Support for contact information.



Caution: Do not use batteries with capacity greater than 26Ah

APC India Pvt. Ltd.
4th Floor, Electra, Wing 'B'
Exora Business parks
Marathahalli,
Sarjapur Outer Ring Road,
Bangalore - 560 103

Customer Service:
Toll free (BSNL Network): 1-800-4254-272
All other networks: (add city code) 39022272

indiainfo@apc.com

APC Corporate
132 Fairgrounds Rd.
West Kingston, RI, 02892 USA

www.apc.com/in

APC
by Schneider Electric